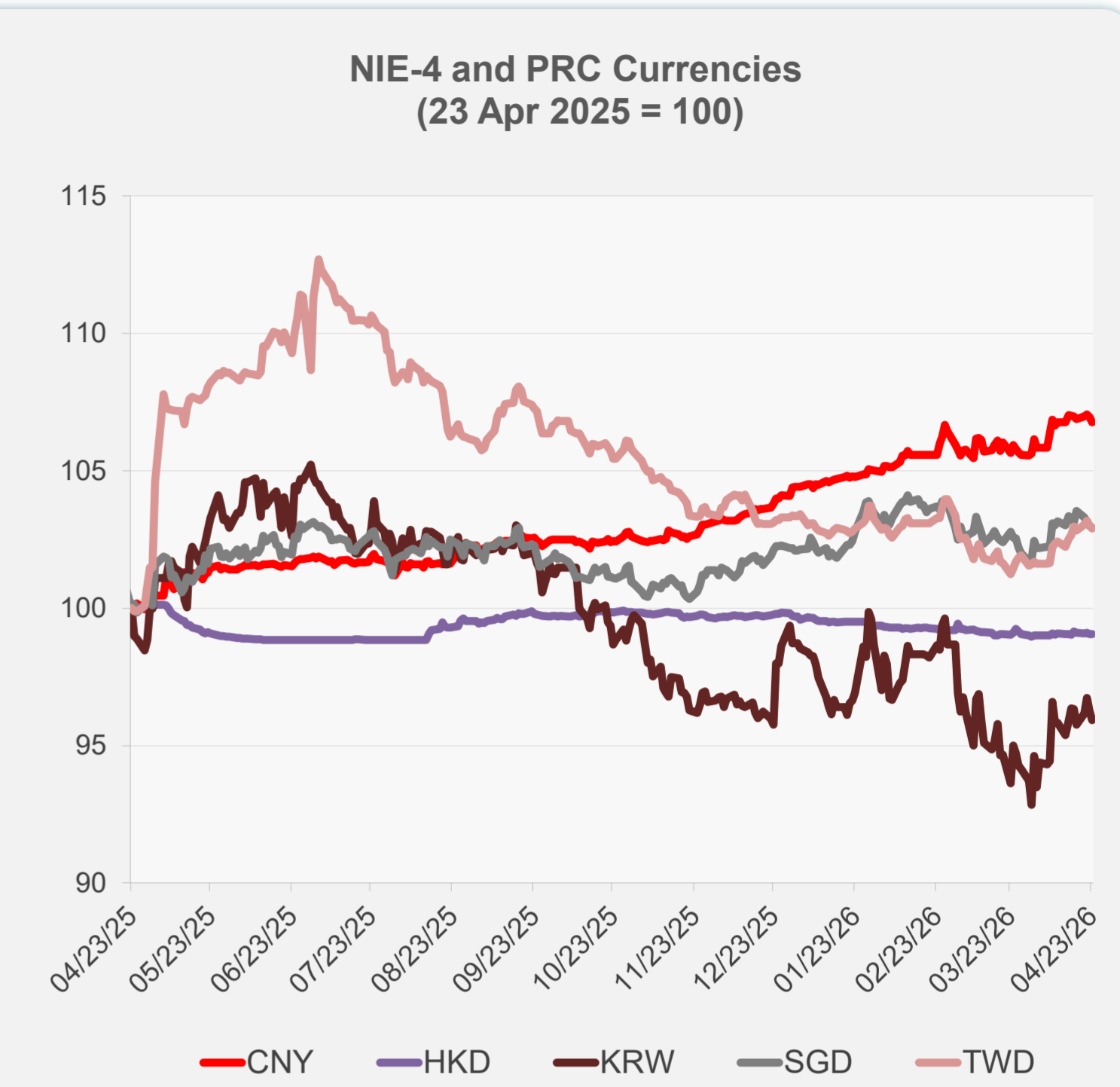
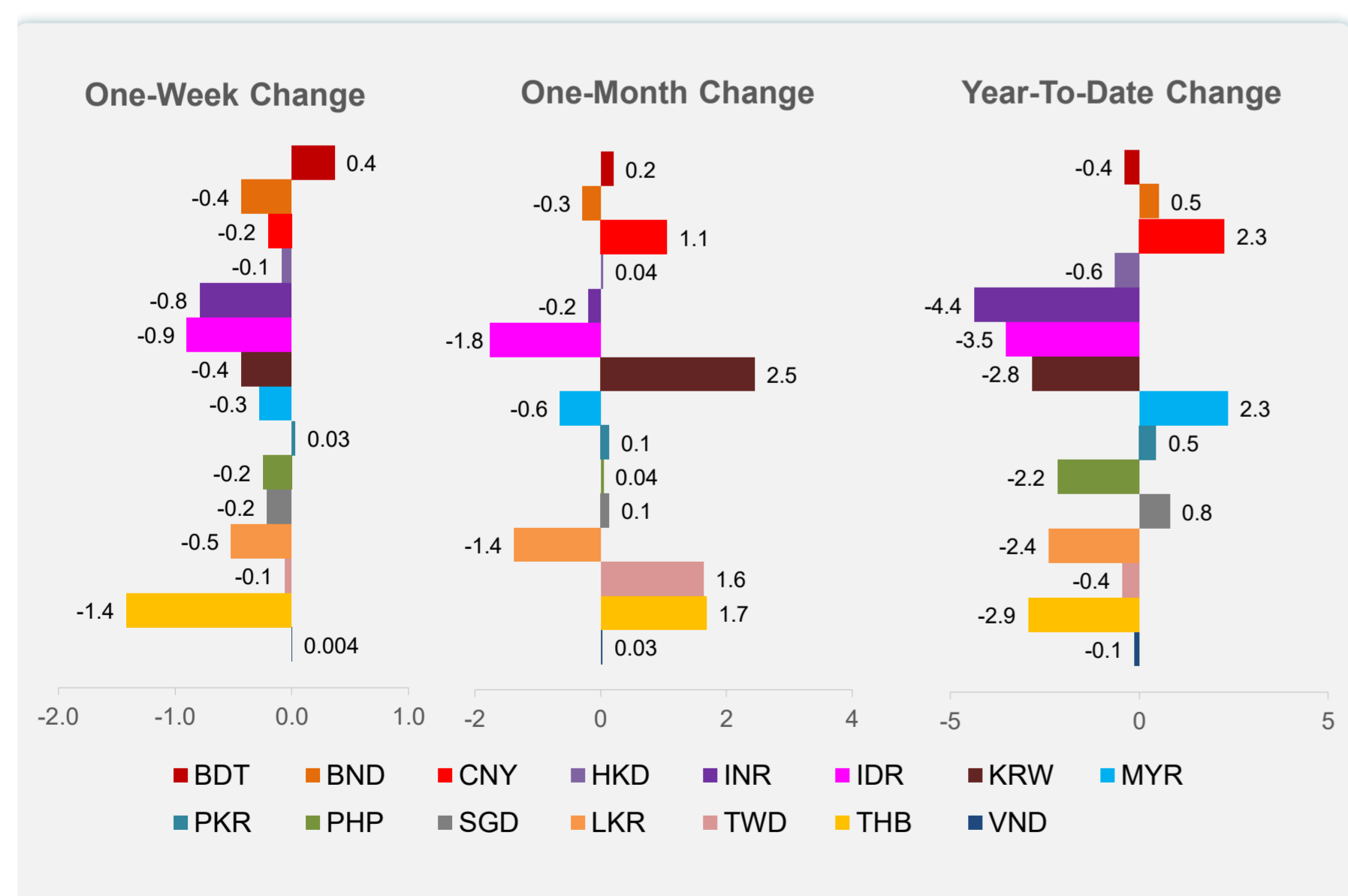
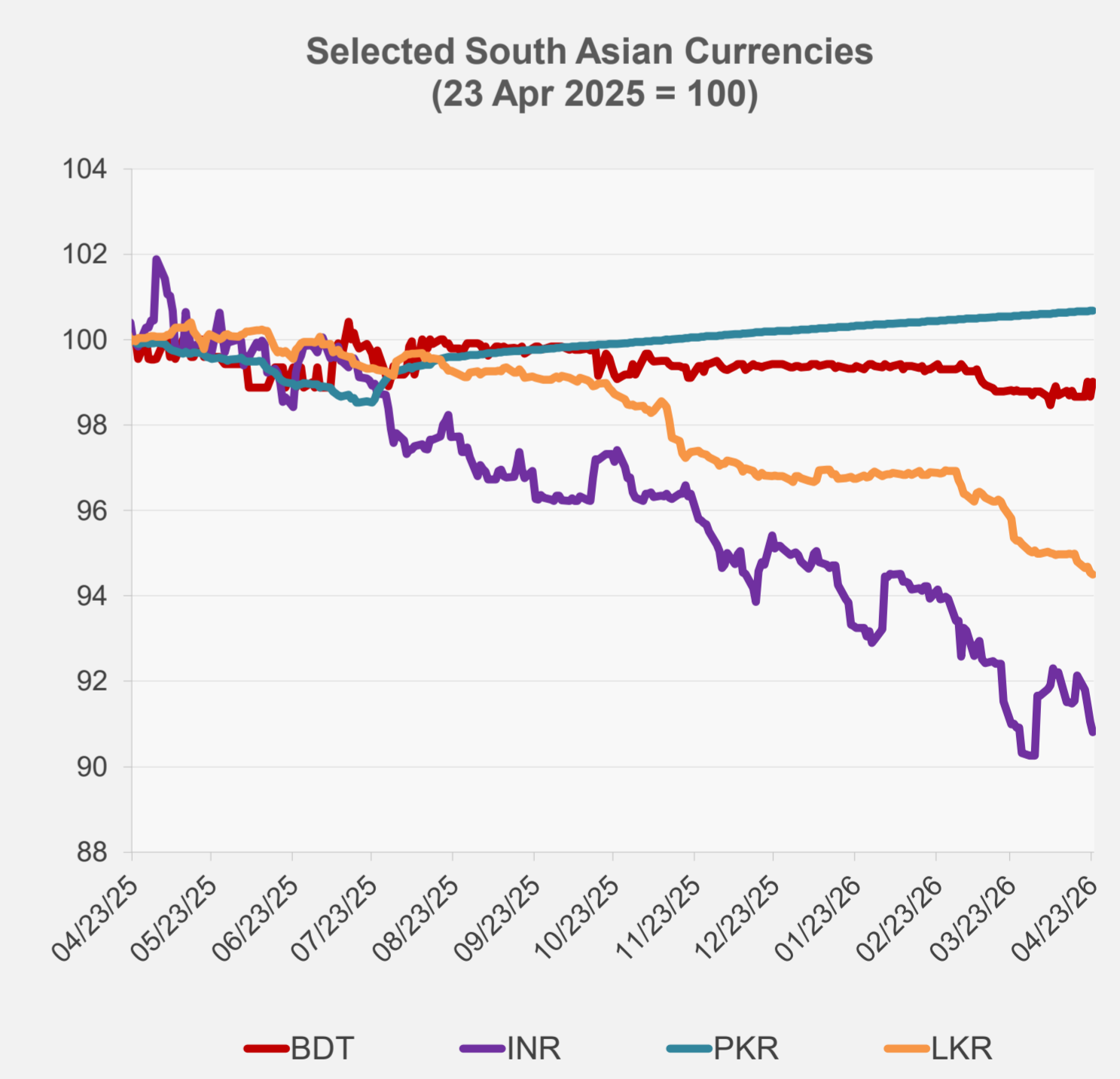
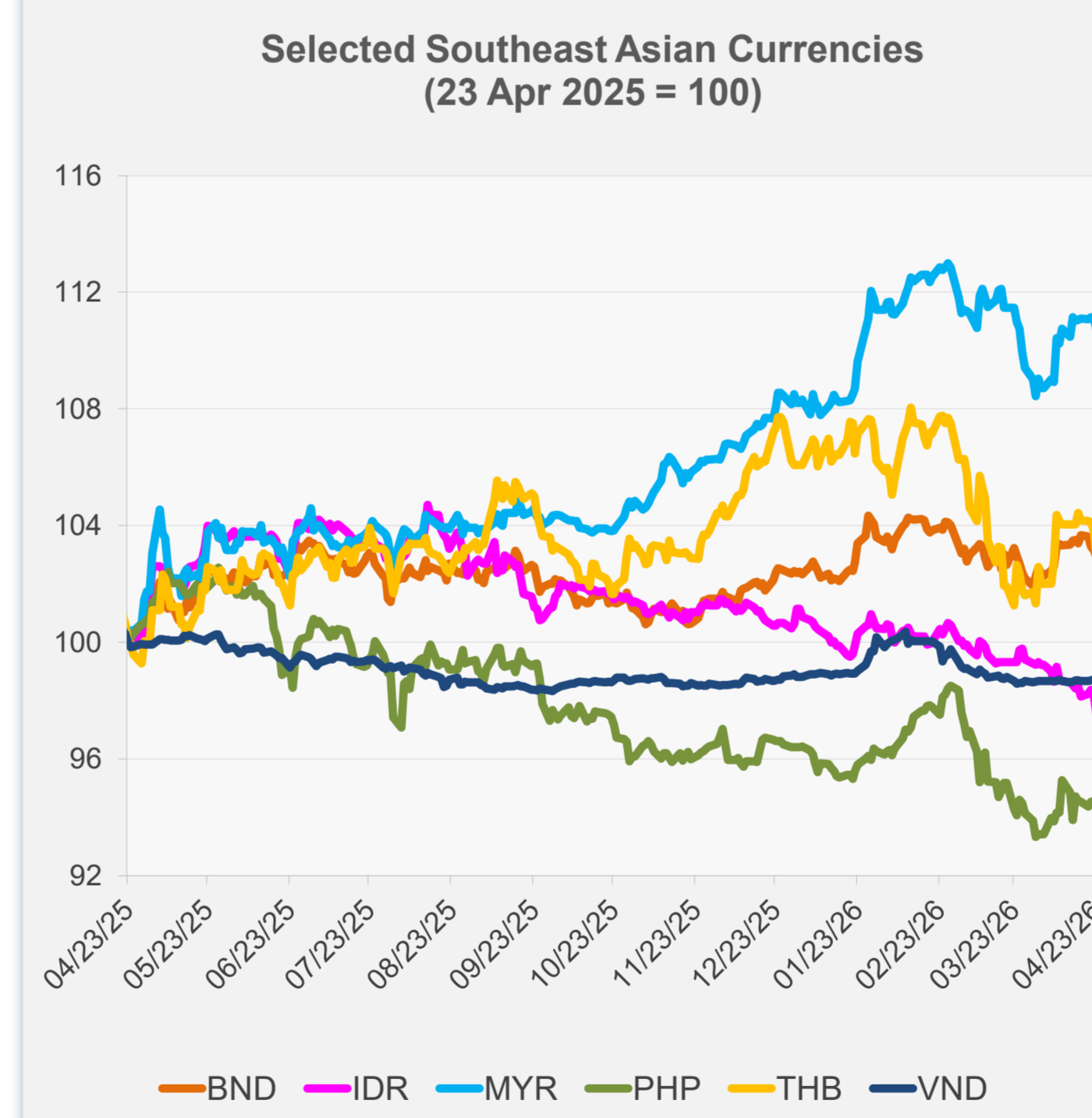


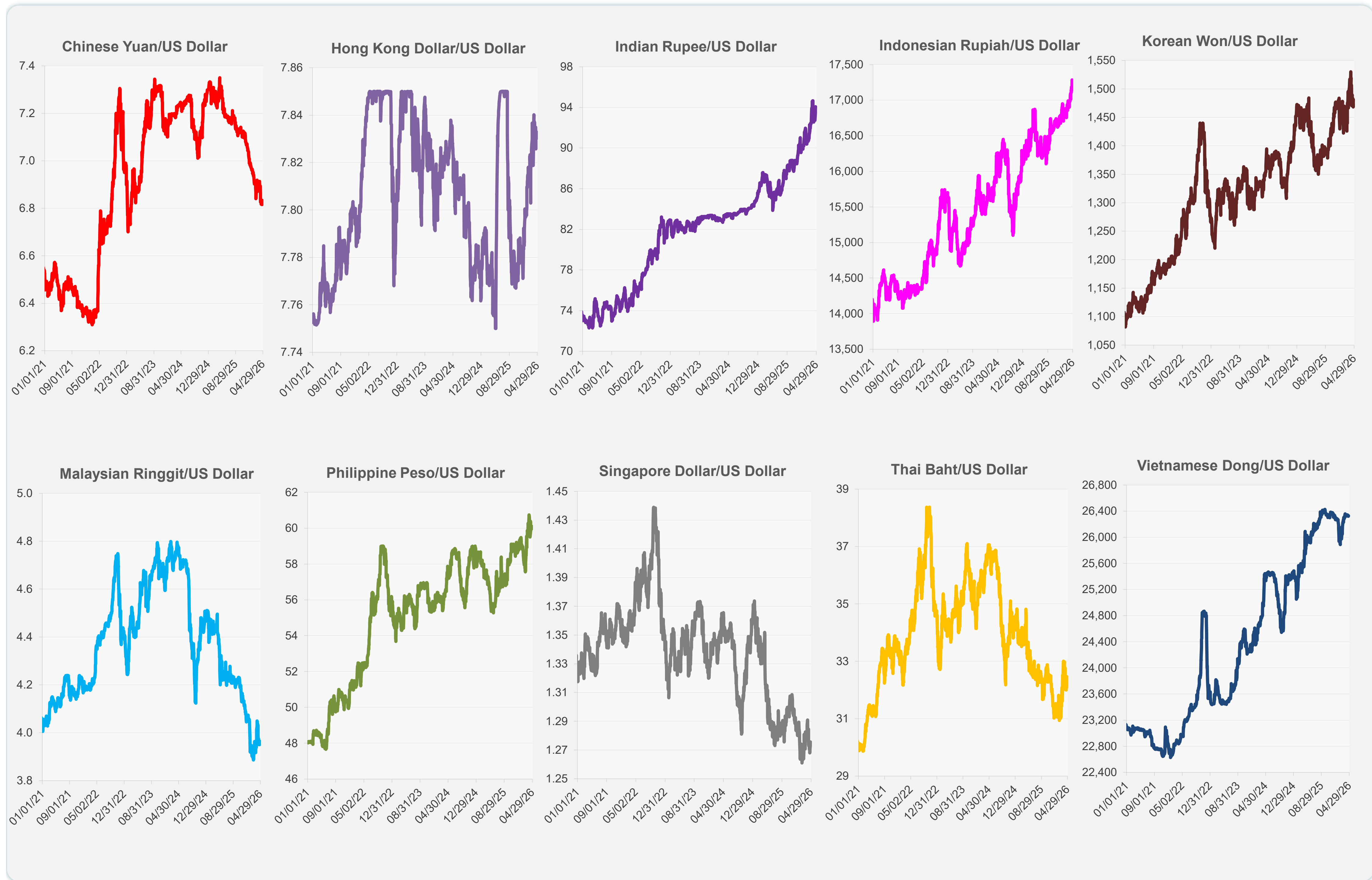
	Latest Closing	% change from Previous Day	% change from 01-Jan-26
Euro	0.85	-0.06	-0.29
Japanese yen (JPY)	159.60	-0.24	-2.27
Bangladeshi taka (BDT)	122.70	0.37	-0.37
Brunei dollar (BND)	1.28	-0.22	0.52
Chinese yuan (CNY)	6.83	-0.17	2.26
Hong Kong dollar (HKD)	7.83	0.01	-0.62
Indian rupee (INR)	94.08	-0.26	-4.36
Indonesian rupiah (IDR)	17,285.00	-0.64	-3.53
Korean won (KRW)	1,481.00	-0.34	-2.84
Malaysian ringgit (MYR)	3.97	-0.32	2.35
Pakistan rupee (PKR)	278.84	0.00	0.45
Philippine peso (PHP)	60.11	-0.26	-2.16
Singapore dollar (SGD)	1.28	-0.07	0.81
Sri Lanka rupee (LKR)	317.15	-0.05	-2.38
Taipei,China NT dollar (TWD)	31.58	-0.11	-0.43
Thai baht (THB)	32.46	-0.85	-2.94
Vietnamese dong (VND)	26,329.00	-0.02	-0.11



NIE = Newly Industrialized Economies



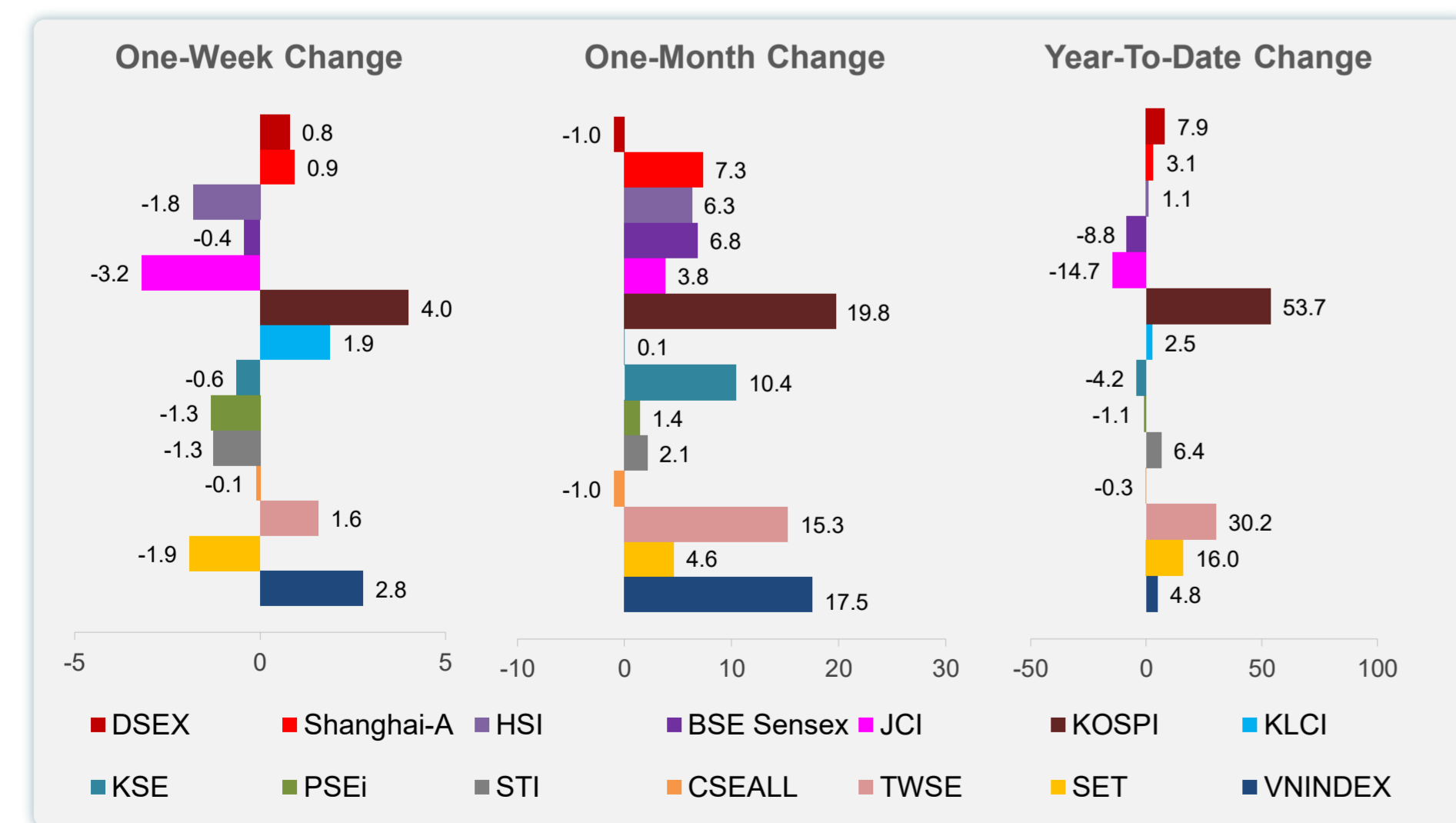
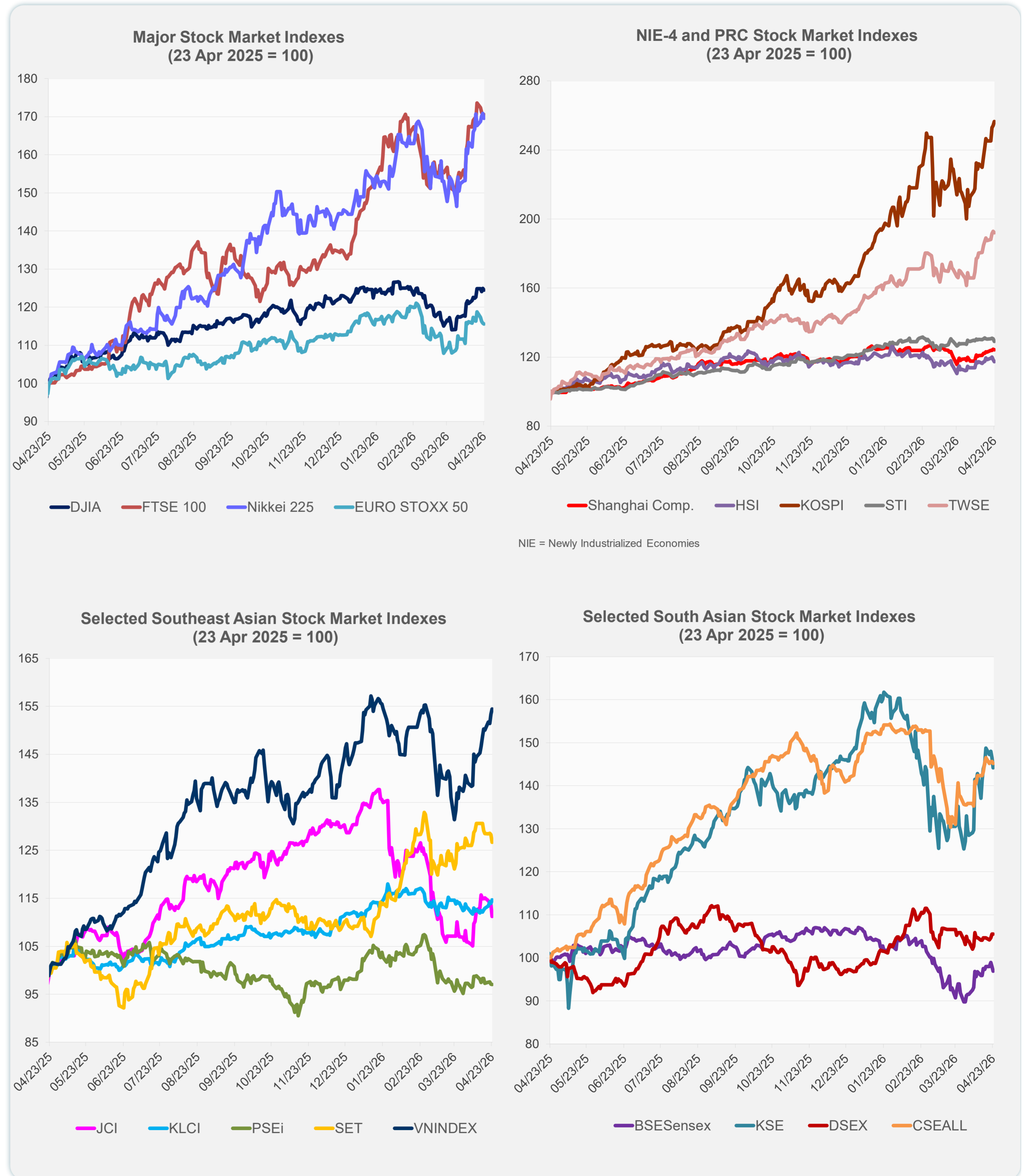
Note: Negative/Decreasing values indicate depreciation of local currency, and positive/increasing values indicate appreciation.  
Source: ADB calculations using data from Bloomberg and Haver Analytics.



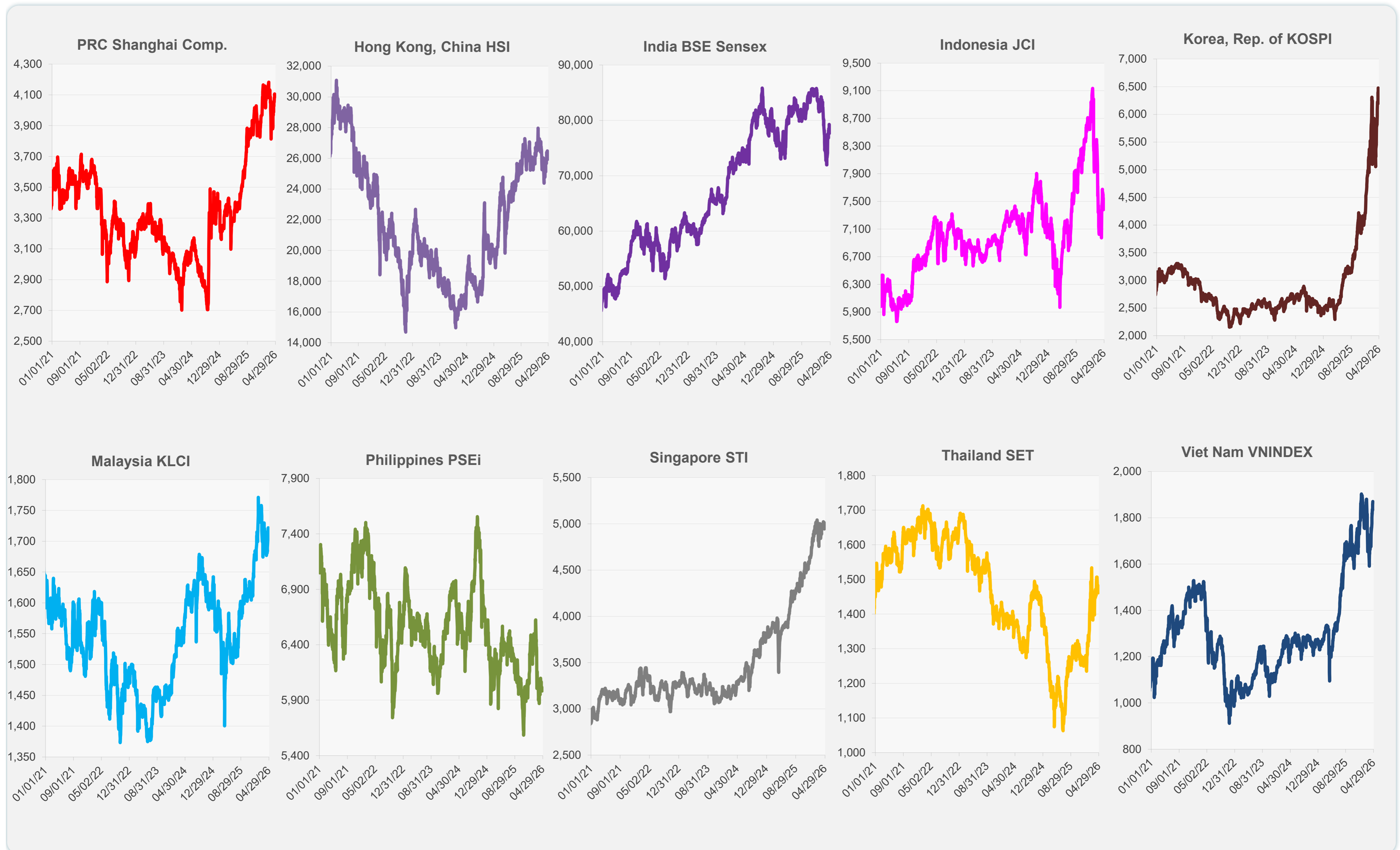
Source: Haver Analytics.

Daily Market Watch  
**STOCK INDEXES**

	Latest Closing	% change from Previous Day	% change from 01-Jan-26
US Dow Jones Ind Avg	49,310.32	-0.36	2.59
US NASDAQ	24,438.50	-0.89	5.15
US S&P 500	7,108.40	-0.41	3.84
UK FTSE 100	14,335.49	0.00	27.30
EURO STOXX 50	5,894.73	-0.19	1.78
Japan NIKKEI 225	59,140.23	-0.75	17.48
Bangladesh DSEX	5,298.59	0.00	7.90
PRC Shanghai Comp.	4,093.25	-0.32	3.13
Hong Kong, China HSI	25,915.20	-0.95	1.11
India BSE Sensex	77,664.00	-1.09	-8.83
Indonesia JCI	7,378.61	-2.16	-14.67
Korea, Rep. of KOSPI	6,475.81	0.90	53.67
Malaysia KLCI	1,721.70	0.66	2.48
Pakistan KSE 100	169,030.80	-1.57	-4.22
Philippines PSEi	5,983.81	-0.10	-1.14
Singapore STI	4,944.11	-1.17	6.41
Sri Lanka CSEALL	22,566.58	-0.32	-0.26
Taipei, China TWSE	37,714.15	-0.43	30.21
Thailand SET	1,461.35	-1.24	16.01
Viet Nam VNINDEX	1,870.36	0.70	4.81



Sources: ADB calculations using data from Bloomberg and CEIC Data Company.

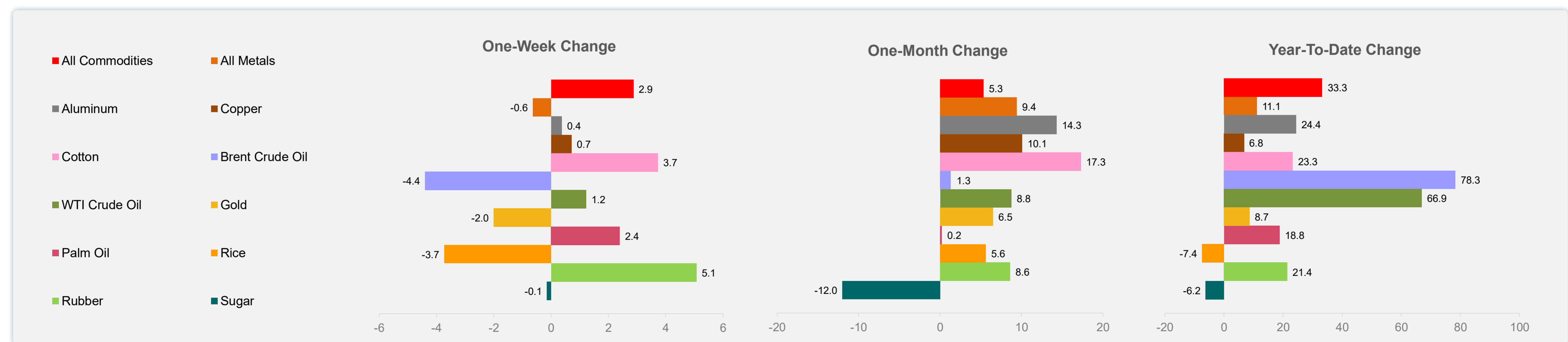
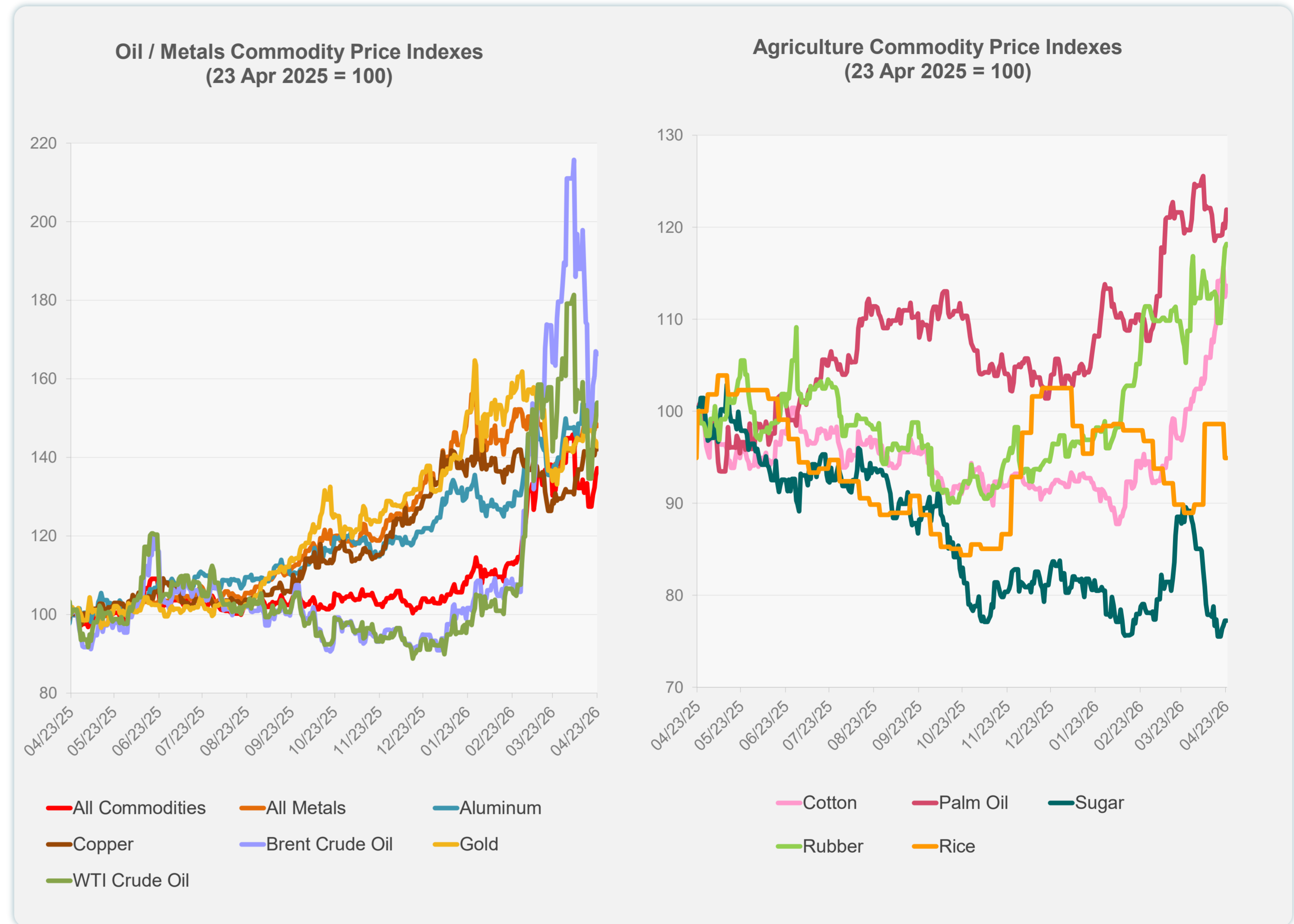


Sources: ADB calculations using data from Bloomberg and CEIC Data Company.

Daily Market Watch  
**COMMODITY PRICES**

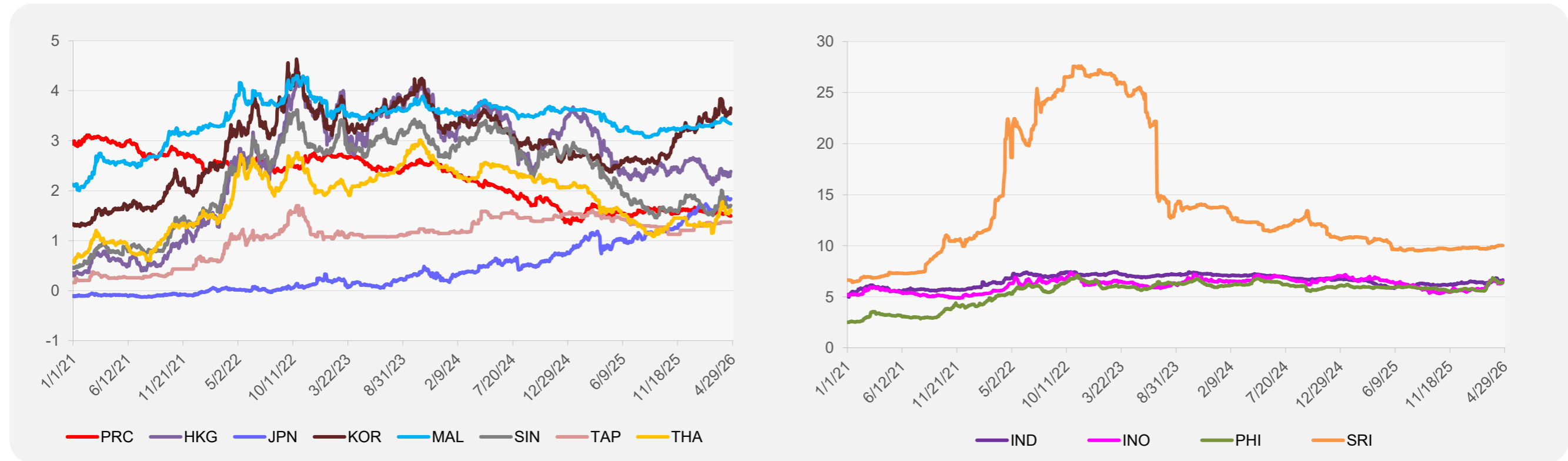
	Unit	Latest Closing	% change from Previous Day	% change from 01-Jan-26
S&P All Commodities	US\$	731.12	1.42	33.29
S&P All Metals	US\$	493.14	-0.55	11.13
Aluminum	US\$/metric ton	3,692.23	0.59	24.40
Copper	US\$/metric ton	13,300.69	-0.55	6.80
Cotton	US cents/lb	76.45	1.07	23.27
Brent Crude Oil	US\$/barrel	111.33	-0.40	78.28
WTI Crude Oil	US\$/barrel	95.85	3.11	66.93
Gold	US\$/troy oz	4,694.14	-0.97	8.68
Palm Oil	US\$/metric tonne	1,150.86	1.65	18.81
Rice <sup>1</sup>	US\$/metric ton	413.00	0.00	-7.40
Rubber <sup>2</sup>	US\$/kg	261.00	0.38	21.40
Sugar	US cents/lb	13.87	0.00	-6.22

<sup>1</sup> Latest closing price from 12 April 2026.  
<sup>2</sup> Singapore Exchange, Ribbed Smoked Sheet Rubber.

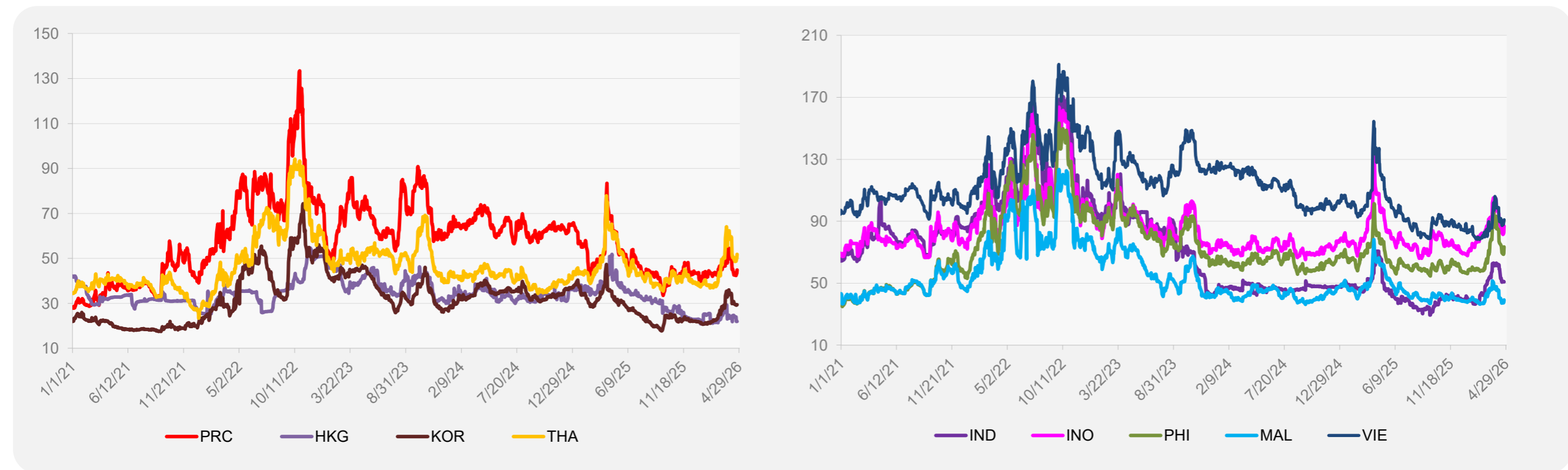


Source: ADB calculations using data from Bloomberg.

### 5-YEAR LOCAL CURRENCY GOVERNMENT BOND YIELDS (%)



### 5-YEAR CREDIT DEFAULT SWAP<sup>1</sup>



<sup>1</sup> In USD and based on sovereign bonds.  
Source: ADB calculations using data from Bloomberg.